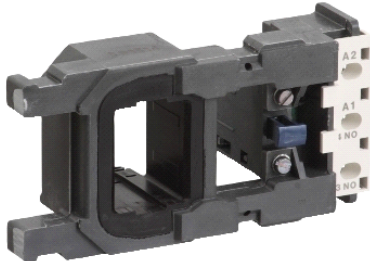


## LX1FG380

TeSys F-zavojnica sklopnika-LX1FG-380... 400 V  
AC 50 Hz-460... 480 V AC 60 Hz



### Glavno

|                              |  |
|------------------------------|--|
| Range                        | TeSys  |
| Product or component type    | Contacteur coil                              |
| Device short name            | LX1FG  |
| Range compatibility          | TeSys F LC1F contactor                       |
| Product compatibility        | LC1F185<br>LC1F225                           |
| Control circuit type         | AC 50/60 Hz                                  |
| [Uc] control circuit voltage | 380...400 V AC 50 Hz<br>460...480 V AC 60 Hz |
| Average resistance           | 51.3 Ohm at 20 °C                            |
| Inductance of closed circuit | 7.75 H                                       |
| Operating time               | 20...35 ms closing<br>7...15 ms opening      |
| Mechanical durability        | 10 Mcycles                                   |
| Operating rate               | <= 2400 cyc/h at <= 55 °C                    |

### Komplementarno

|                                 |  |
|---------------------------------|--|
| Coil technology                 | Without built-in suppressor module   |
| Control circuit voltage limits  | 0.85...1.1 Uc at 55 °C operational 50/60 Hz<br>0.35...0.55 Uc at 55 °C drop-out 50/60 Hz |
| Inrush power in VA              | 805 VA at 20 °C (cos φ 0.3) 50 Hz<br>970 VA at 20 °C (cos φ 0.3) 60 Hz                   |
| Hold-in power consumption in VA | 55 VA at 20 °C (cos φ 0.3) 50 Hz<br>66 VA at 20 °C (cos φ 0.3) 60 Hz                     |
| Heat dissipation                | 18...24 W at 50/60 Hz  |

### Okolina

|                                       |              |
|---------------------------------------|--------------|
| ambient air temperature for operation | > -5...55 °C |
| product weight                        | 0.55 kg      |

### Offer Sustainability

|   |   |
|---|---|
| Green Premium product   | Green Premium product   |
| Compliant - since 0830 - Schneider Electric declaration of conformity | Compliant - since 0830 - Schneider Electric declaration of conformity |
| Reference not containing SVHC above the threshold                     | Reference not containing SVHC above the threshold                     |
| Available   | Available   |
| Available   | Available   |

### Contractual warranty

|                 |           |
|-----------------|-----------|
| Warranty period | 18 months |
|-----------------|-----------|

Informacije dane u ovoj dokumentaciji sadrže opće opise i/ili tehničke karakteristike o performansama ovdje sadržanih proizvoda. Ova dokumentacija nije namijenjena kao zamjena za niti bi se trebala koristiti za određivanje prikladnosti ili pouzdanosti predmetnih proizvoda za konkretne korisničke primjene. Svaki takav korisnik ili integrator dužan je provesti odgovarajuću i potpunu analizu rizika, procjenu i ispitivanje proizvoda u odnosu na odgovarajuću specifičnu primjenu ili uporabu istog. Niti društvo Schneider Electric, Industries SAS niti bilo koje od njegovih povezanih poduzeća ili podružnica neće preuzeti obvezu ili snositi odgovornost za pogrešnu upotrebu ovdje sadržanih informacija.