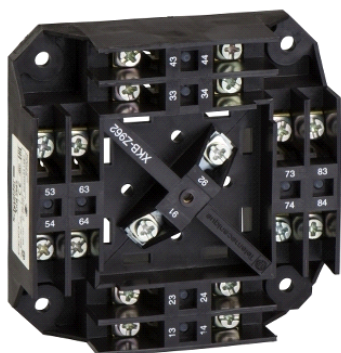


XKBZ994

kontaktni blok sa sig. ručicom („dead man”)/ručicom s ugrađenim tipkalom—za XKB



Glavno

Product or component type	Controllers separate parts
Accessory / separate part category	Control accessory
Product specific application	Light hoisting applications
Product compatibility	XKB
Accessory / separate part type	Contacts block
Accessory / separate part specific characteristic	For use with built-in push-button handle For use with Dead man's handle

Komplementarno

Contact block per direction [control circuit]	1 zero (center) position 2 zero per movement 4 per movement
Electrical connection	Screw clamp terminal, connection capacity: 1 x 0.5...1 x 1.5 mm ² Screw clamp terminal, connection capacity: 1 x 0.5...1 x 2.5 mm ²
Enclosure/cubicle description	Monobloc
Contacts type and composition	1 NO 2 NC 8 NO
Contact operation	Double-break Slow-break
[I _{th}] conventional free air thermal current	10 A conforming to IEC 337-1 10 A conforming to NF C 63-140 10 A conforming to VDE 0660 10 A conforming to CSA C22.2 No 14
[U _i] rated insulation voltage	500 V AC/DC conforming to IEC 158-1 500 V AC/DC conforming to NF C 20-040 500 V AC/DC conforming to VDE 0110
Resistance across terminals	25 mOhm at 1 A conforming to NF C 93-050
Positive opening	With
Short-circuit protection	10 A cartridge fuse type gG conforming to IEC 337-1B 10 A cartridge fuse type gG conforming to VDE 0660 part 2
Electrical durability	1000000 cycles DC inductive load at 120 V, power broken = 75 conforming to IEC 337-1 DC-11, operating rate = 60 cyc/mn 0.5 1000000 cycles DC inductive load at 24 V, power broken = 90 conforming to IEC 337-1 DC-11, operating rate = 60 cyc/mn 0.5 1000000 cycles DC inductive load at 48 V, power broken = 90 conforming to IEC 337-1 DC-11, operating rate = 60 cyc/mn 0.5
Product weight	0.215 kg

Okolina

standards	CENELEC EN 50013
-----------	------------------

Contractual warranty

Warranty period	18 months
-----------------	-----------

Informacije dane u ovoj dokumentaciji sadrže opće opise i/ili tehničke karakteristike o performansama ovdje sadržanih proizvoda. Ova dokumentacija nije namijenjena kao zamjena za niti bi se trebala koristiti za određivanje prikladnosti ili pouzdanosti predmetnih proizvoda za konkretne korisničke primjene. Svaki takav korisnik ili integrator dužan je provesti odgovarajuću i potpunu analizu rizika, procjenu i ispitivanje proizvoda u odnosu na odgovarajuću specifičnu primjenu ili uporabu istog. Niti društvo Schneider Electric Industries SAS niti bilo koje od njegovih povezanih poduzeća ili podružnica neće preuzeti obvezu ili snositi odgovornost za pogrešnu upotrebu ovdje sadržanih informacija.